

Rice Field Train

Konan Railway Konan Line

City Walking Map

Tsugaru-onoe Station Area

- Food
- Photo Spot
- Temple & Shrine
- Historic Monument
- Information
- Toilet
- Souvenir
- Park
- Public Bathing

Time required by walk

Tsugaru-onoe Station	9 min
① Seido-shi Shoin Garden	1 min
② Seibien	15 min
③ Saruka Shrine	1 min
④ Saruka Park	4 min
⑤ Shiki-no-kura Omotenashi Romankan	11 min
Tsugaru-onoe Station	

④ Saruka Park



Location: Saruka ishbayashi, Hirakawa City
Enquiry: Hirakawa City Commerce and Tourism Division 0172-44-1111

In the Saruka Park, you can enjoy the pale pink lotus flowers that bloom all over the Kagamigaiké Pond from mid-July to early September.

② Seibien



Location: 1 Saruka ishbayashi, Hirakawa City
Tel: 0172-57-2020 / 0172-43-5610 (Winter Season)
Open: From mid-April to end of September, 09:00AM ~ 5:00PM
From October to November, 09:00AM ~ 4:30PM
From mid-November to mid-April, 10:00AM ~ 3:00PM (Open During Winter Season)
Closed: December 29 ~ January 3

① Seido-shi Shoin Garden



Location: 1-6 Saruka ishbayashi, Hirakawa City
Tel: 0172-57-2127
Open: 9:00AM ~ 5:00PM ※Need to Check
Closed: Open all-year-round ※Need to Check

⑤ Shiki-no-kura Omotenashi Romankan



Location: 10-1 Saruka ishbayashi, Hirakawa City
Tel: 0172-43-5610
Open: 9:00AM ~ 5:00PM (November to March 9:00AM ~ 4:30PM)
Closed: Year-end and new year holidays

③ Saruka Shrine



Location: 175 Saruka ishbayashi, Hirakawa City
Tel: 0172-57-2016



Hirakawa City Hall Onoe Branch

Daijyu Shokudo (Tsugaru Centennial Eating-house)



Tsugaru-onoe Station has been selected as one of the 100 best stations in Tohoku as a temple-style station building built after Saruka Shrine, which is said to have been built by Sakanoue No Tamuramaro.

Hakuno High School

Onoe High School



Rice Field Train

Konan Railway Konan Line

City Walking Map

Tanbo Art Station Area

*Trains only stop at Tanbo Art Station during the daytime (trains from 5:00AM to 7:00AM and from 6:00PM to 10:00PM will pass this station).
Also, please note that all trains will not stop at Tanbo Art Station, except during the event, due to the closure of related facilities during the winter period from December 1 to March 31.

Food	Souvenir
Photo Spot	Park
Museum	
Toilet	

Time required by walk

Tanbo Art Station	
2 min	
① Yayoi no Sato Observation Platform (Second Venue)	
3 min	
② Inakadate Village Relics Museum	
1 min	
③ Michi-no-eki Inakadate Yayoi no Sato	
11 min	
④ Yuto no Yakata	
21 min	
⑤ Inakadate-mura Town Hall Observation Platform (First Venue)	
5 min	
⑥ Sightseeing Strawberry farm Agri-na	
26 min	
Tanbo Art Station	



Sakainatsu ↑

Onoe High School ↓

The station building is decorated by contemporary art.

⑤ Inakadate-mura Town Hall Observation Platform (First Venue)

Location: 123-1 Nakatsuji, Inakadate, Inakadate Village
Enquiry: Inakadate Village Planning and Tourism Division 0172-58-2111
※Normally from mid-June to early October every year

⑥ Sightseeing Strawberry farm Agri-na

Location: 10-1 Nakatsuji, Inakadate, Inakadate Village
Tel: 0172-55-6016
Open: Strawberry picking: 10:00AM ~ 12:00AM
Fresh Market: 10:00AM ~ 12:30AM
※Reservation accepted from 2 weeks in advance
Closed: Obon Holiday, Year-end and new year holidays

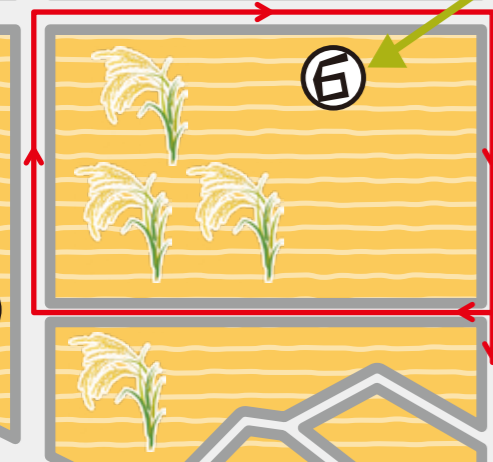
① Yayoi no Sato Observation Platform (Second Venue)

Location: 4-1 Izumi, Takahi, Inakadate Village
Enquiry: Inakadate Village Planning and Tourism Division 0172-58-2111
※Normally from mid-June to early October every year

Michi-no-eki Inakadate Yayoi no Sato

Location: 10 Yahata, Takahi, Inakadate Village
Tel: 0172-58-4411
Open: Market: 8:30AM ~ 6:00PM (5:30PM during December to March)
Restaurant: 11:00AM ~ 5:30PM (Last Order 4:30PM)
Outdoor playset: 9:00AM ~ 5:00PM
Closed: December 31PM to January 1
Outdoor playset: The third Tuesday (If it is a public holiday, then closed on the next day.)

● Inakadate Post Office



① Outdoor Playset

③

KK 10 Rice Paddy Art Inakadate Village Museum ②

Tanbo Art Station is painted and decorated by the Rice Station Project, a project to decorate the station with "rice".



② Inakadate Village Relics Museum

Location: 63 Omagari, Takahi, Inakadate Village
Tel: 0172-43-8555
Open: 10:00AM ~ 5:00PM (Last Entry 4:30PM)
Closed: Every Monday (If it is a public holiday, then closed on the next day.), Year-end and new year holidays

④ Yuto no Yakata

Location: 47 Nagata, Tareyanagi, Inakadate Village
Tel: 0172-58-4689
Open: 9:00AM ~ 5:00PM
Closed: Every Monday (If it is a public holiday, then closed on the next day.), Year-end and new year holidays



102

102

102

Rice Field Train

Konan Railway Konan Line

City Walking Map

Kuroishi Station Area



- Kuroishi Tsuyu Yakisoba
- Photo Spot
- Park
- Museum
- Souvenir
- Historic Monument
- Information
- Toilet

Kuroishi Tsuyu Yakisoba

Once sold as children's favorite snack, Kuroishi Yakisoba (fried noodles) features thick noodles with a mochi-like texture flavored with Worcestershire sauce. Kuroishi Tsuyu Yakisoba is a modified version of the traditional Kuroishi Yakisoba, served in a Japanese style broth "Tsuyu". A local comfort food unique in all of Japan.

Kuroishi Tourist Information Center

Kuroishi



Kuroishi Post Office

3 Kuroishi City Fire Brigade Third Branch Third Fire Department Tunsho

Location: 3 Kotokubeemachi, Kuroishi City
Enquiry: Kuroishi City Board of Education Division 0172-52-2111

2 Matsuno Yu Community Center

Location: 33 Nakamachi, Kuroishi City
Tel: 0172-55-6782
Open: 9:30AM ~ 6:00PM
Closed: Year-end and new year holidays

1 Nakamachi Komise Street

5 Tsugaru Komise Station

Location: 5 Nakamachi, Kuroishi City
Tel: 0172-59-2080
Open: 9:00AM ~ 5:00PM
Closed: January 1

- Time required by walk
- Kuroishi Station
 - 9 min
 - 1** Nakamachi Komise Street
 - 1 min
 - 2** Matsuno Yu Community Center
 - 1 min
 - 3** Kuroishi City Fire Brigade Third Branch Third Fire Department Tunsho
 - 2 min
 - 4** Craft Work Shop IRODORI
 - 1 min
 - 5** Takahashi Family Residence
 - 1 min
 - 6** Tsugaru Komise Station Akita Ujaku Memorial Hall
 - 1 min
 - 7** Narumi Sake Brewery
 - 7 min
 - 8** Kanehiranar Garden
 - 9 min
 - Kuroishi Station



4 Craft Work Shop IRODORI

Location: 38 Nakamamachi, Kuroishi City
Tel: 0172-55-6782
Open: Work day 11:00AM ~ 3:00PM
Weekends & Public Holiday: 10:00AM ~ 4:00PM
Closed: Tuesday

Yokocho Kaguji Square

3 Restaurant Miyuki

Nakamura Kamekichi Sake Brewery

6 Akita Ujaku Memorial Hall

Location: 5 Nakamachi, Kuroishi City (Tsugaru Komise Station 2F)
Tel: 0172-59-2080
Open: 9:00AM ~ 4:00PM
Closed: January 1

5 Takahashi Family Residence

Location: 38 Nakamamachi, Kuroishi City
Tel: 0172-52-5374
Open: 9:00AM ~ 4:00PM (late April to the end of November)
*Reservation is needed for tour from December to early April.
Closed: Irregular

Kurayoshi Suzunoya

Kuroishi City Industrial Hall

Kuroishi City Hall

Kuroishi City Sports Community Center

7 Narumi Sake Brewery

Location: 1-1 Nakamachi, Kuroishi City
Tel: 0172-52-3321
Open: 8:00AM ~ 5:00PM
Closed: Irregular
Brewery Tour: Need to check on the homepage.
Oishi Bugakuryu style Tour: Anytime

8 Kanehiranar Garden

Location: 4 Uchimachi, Kuroishi City
Tel: 0172-52-2111
Open: 9:30AM ~ 4:00PM (April to November)
*Last entry: 3:30PM
Closed: Every Monday (If it is a public holiday, then closed on the next day.)

Apple Orchard Train

Konan Railway Owani Line

City Walking Map

Chuo-hirosaki Station Area

- Time required by walk
- ① Chuo-hirosaki Station 4 min
 - ② Former Residence of the Japanese Army Eleventh Division Commissioner 9 min
 - ③ Saisoin Temple 12 min
 - ④ Five-Storeyed Pasoda 9 min
 - ⑤ Former Residence of the Japanese Army Eleventh Division Commissioner 9 min
 - ⑥ Fujiita Memorial Garden 2 min
 - ⑦ Former Residence of the Japanese Army Eleventh Division Commissioner 9 min
 - ⑧ Hirotsuki Castle (Castle Tower) 14 min
 - ⑨ Ishiba Ryokan 9 min
 - ⑩ Tsugaru-han Neputa Village 10 min
 - ⑪ Sakurayama 1 min
 - ⑫ Chuo-hirosaki Station 11 min

⑥ Hirotsuki Castle (Castle Tower)



Location: 1 Shimoshiroganecho, Hirosaki City
Enquiry: Hirosaki City Parks and Urban Greenery Division 0172-33-8739

⑤ Fujiita Memorial Garden



Location: 8-1 Kamishiroganecho, Hirosaki City
Tel: 0172-37-5525
Open: 9:00AM ~ 5:00PM (Last Entry 4:30PM)
During Cherry Blossom Festival 9:00AM ~ 9:00PM (Last Entry 8:30PM)
During Special Night-time Opening 9:00AM ~ 8:00PM (Last Entry 7:30PM)
Closed: November 24 to Mid-April (Partially Closed in Winter)

④ Former Residence of the Japanese Army Eleventh Division Commissioner



Location: 1 Kamishiroganecho, Hirosaki City
Enquiry: Hirosaki City Board of Education Cultural Properties Division 0172-35-1111

Currently, it is opened as Starbucks Coffee Hirosaki Koen-mae.

② Saisoin Temple



Location: 63 Doyamachi, Hirosaki City
Tel: 0172-34-1123
Open: 9:00AM ~ 4:30PM
*varies depending on seasons
Closed: Open all-year-round

Naka-cho Historical House Preservation Area

Café Hanamaru
Ishiba Family Residence

⑦ BOULANGERIE Four

⑦ Kawasaki Dye Works



Location: 63 Kamenokomachi, Hirosaki City
Tel: 0172-35-6552
Open: 9:00AM ~ 5:00PM (Winter 9:00AM ~ 4:00PM)
Closed: Thursday
*Reservation is required for experiences

Apple Pie from the Apple Town

Hirosaki city of Aomori is the largest producer of apples in Japan. The acclaimed apple pies loaded with local apples are available for purchase in over 40 stores across the city.



- Food
- Temple & Shrine
- Stay
- Museum
- Souvenir
- Park
- Apple Pie
- Photo Spot
- Historic Monument
- Information
- Toilet

⑧ Tsugaru-han Neputa Village



Location: 61 Kamenokomachi, Hirosaki City
Tel: 0172-39-1511
Open: 9:00AM ~ 5:00PM
Restaurant: 11:00AM ~ 3:00PM
Closed: Open all-year-round

⑨ Ishiba Ryokan



Location: 55 Mototeramachi, Hirosaki City
Tel: 0172-32-9118

⑩ Hirosaki Church of the United Church of Christ in Japan



Location: 48 Mototeramachi, Hirosaki City
Tel: 0172-32-3974
Open: 9:00AM ~ 4:00PM
Closed: Wednesday AM, Sunday AM, When staff is absent

Hirosaki Park

Recreation Ground
Gardening Information Center

Hirosaki Cultural Center

Hirosaki City Museum

Hirosaki Castle Information Center

Café Buruman

Hyakkoku-machi Exhibition Hall

Le Castle Factory

③ Former Fifty-Ninth Bank (Aomori Bank Memorial Hall)



Location: 26 Motonagamachi, Hirosaki City
Tel: 0172-36-6350
Open: 9:30AM ~ 4:30PM
Closed: Every Tuesday, Year-end and new year holidays (December 29 to January 3)

Hirosaki Civic Hall

Hirosaki Civic Central Square

Patisserie Verger

Le-chocolat

Chuo-hirosaki Station



Chuo-hirosaki Station has been selected as one of the 100 best stations in Tohoku as "a summer-friendly station near the famous cherry blossom spot, Hirosaki Park, where the cool breeze from the Tsuchibuchigawa River in front of the Station is comfortable."

Otemon Gate

Sakura House

Salon de cafe Ange

Matani Bakery

Patisserie Yamazaki

Convenience Store

Nakasan Hirosaki

Oven Fresh Shiroganekan

Hirosaki City Hall

Former Hirosaki City Library & Former To-o Gijyuku Missionary House

Convenience Store

Hirosaki Anglican Ascension Church


Hirosaki Municipal Tourist Center

Hirosaki University Hospital

Convenience Store

Chuo-hirosaki

① Hirosaki Museum of Contemporary Art



Location: 2-1 Yoshinocho, Hirosaki City
Tel: 0172-32-8950
Open: 9:00AM ~ 5:00PM
Closed: Every Tuesday (If it is a public holiday, then closed on the next day.), Year-end and new year holidays

Terasawagawa River

Tsuchibuchigawa River

Apple Orchard Train

Konan Railway Owani Line

City Walking Map

Ishikawa Station Area



Hirosaki City Ishikawa Office
Hirosaki City Ishikawa Public Hall

Hirakawa River

Michi-no-eki Hirosaki
San Festa Ishikawa

- Food
- Apple Pie
- Souvenir
- Temple & Shrine
- Park
- Photo Spot
- Toilet

Time required by walk

- Ishikawa Station
- 8 min
- ① Daibutsu Park (Ishikawa Castle Ruins)
- 10 min
- ② Ishikawa Hachimangu Shrine
- 8 min
- ③ Tsugaru Akatsuki no Kai
- 5 min
- Ishikawa Station

Apple Pie from the Apple Town

Hirosaki city of Aomori is the largest producer of apples in Japan. The acclaimed apple pies loaded with local apples are available for purchase in over 40 stores across the city.



Tsugaru Akatsuki no Kai

Location: 44-13 Yagishi, Ishikawa, Hirosaki City
Tel: 0172-49-7002 (president Kudo Ryoko's residence)
Open: Every Thu, Fri, Sat, Sun 11:30AM ~ 2:00PM
*Reservation is required at least 3 days in advance (for at least 4 people)

Sweets Shop Murakami

← Gijuku High School

Ishikawa



Ishikawa Riverside Sports Ground

Multi-purpose Square



Observation Square

Ishikawa Pool

You can enjoy the scenery of white apple flowers in early May and red apples from late October.



② Ishikawa Hachimangu Shrine

Location: 62 Terayama, Ishikawa, Hirosaki City

A cute oni-ko (demon) is displayed at the torii gate of Ishikawa Hachimangu Shrine.

Bungaku no Oka (Literary hill)

① Daibutsu Park (Ishikawa Castle Ruins)

Location: Daibutsu, Ishikawa, Hirosaki City
Enquiry: Hirosaki City Parks and Urban Greenery Division 0172-33-8739
*Closed in Winter due to snow

About 2,500 hydrangeas are planted in the Daibutsu Park. In July, the Hydrangea Festival will be held here.



Apple Orchard Train

Konan Railway Owani Line

City Walking Map

Owani Station Area

※After you getting off the train at Owani Station, please climb the stairs at the platform and pass the JR overpass to exit the Station from the south exit.
Do not exit the Station from the north exit.



① Daienji Temple
Location: 12 Muraoka, Kuradate, Owani Town
Tel: 0172-48-2017



② Yamani Senyukan
Location: 47-1 Muraoka, Kuradate, Owani Town
Tel: 0172-48-3171



③ Oyu Kaikan
Location: 53 Muraoka, Kuradate, Owani Town
Tel: 0172-47-8244
Open: 6:00AM ~ 9:00PM
Closed: Second Monday



④ Aoyagi Kaikan
Location: 27-2 Yunokawahara, Owani, Owani Town
Tel: 0172-48-4002
Open: 6:00AM ~ 9:00PM
Closed: 22 of every month



④ Asahi-ya Hikage Shokudo (Tsugaru Centennial Eating-house)
Location: 27-2 Yunokawahara, Owani, Owani Town
Tel: 0172-48-4002
Open: 6:00AM ~ 9:00PM
Closed: 22 of every month

④ Marushichi Tsugaru Miso Shoyu
Location: 11-11 Kawabe, Owani, Owani Town
Tel: 0172-49-1126
Open: 9:00AM ~ 10:00PM



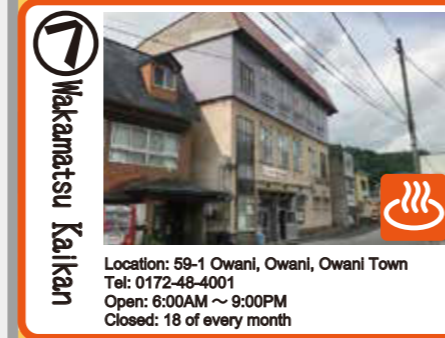
④ Ikoi Shokudo (Tsugaru Centennial Eating-house)
Location: Owani area, Owani, Owani Town
Enquiry: Owani Town Planning and Tourism Division
0172-48-2111



⑧ Regional Intercommunition Center Wani-come
Location: 11-11 Kawabe, Owani, Owani Town
Tel: 0172-49-1126
Open: 9:00AM ~ 10:00PM



⑦ Wakamatsu Kaikan
Location: 59-1 Owani, Owani, Owani Town
Tel: 0172-48-4001
Open: 6:00AM ~ 9:00PM
Closed: 18 of every month



⑥ Chausuyama Park, Hachimangu Shrine
Location: Chausukan area, Owani, Owani Town
Enquiry: Owani Town Planning and Tourism Division
0172-48-2111



About 40 species 15,000 rhododendrons are planted in the Chausuyama Park. In late May, the Rhododendron Festival will be held here.

⑤ Owani Onsen Moyashi (Bean Sprouts) Ramen
Owani onsen moyashi (bean sprouts) have around 400-year old history of cultivation exclusively using the water and heat from the Owani hot spring. The desirability of Owani onsen bean sprouts comes from its extra crunch and superior flavor. The local ramen, Owani Onsen Moyashi Ramen, is topped with the crunchy sprouts, and is quite addictive. It is a kind of dish you must try!
※The season of Owani onsen moyashi is from November to May. Depending on the cultivation situation, it may not be served in the shop.



- Time required by walk
- Owani Station 7 min
 - ① Daienji Temple 4 min
 - ② Yamani Senyukan (Ryokan) 1 min
 - ③ Oyu Kaikan (Hot Spring Bathing) 2 min
 - ④ Aoyagi Kaikan 4 min
 - ⑤ Yudamaishiyakushido 4 min
 - ⑥ Chausuyama Park, Hachimangu Shrine 3 min
 - ⑦ Wakamatsu Kaikan 7 min
 - ⑧ Regional Intercommunition Center Wani-come 3 min
 - Owani Station

- 🍜 Owani Onsen Moyashi (Bean Sprouts) Ramen
- 🛍️ Souvenir
- 📷 Photo Spot
- 🌳 Park
- 🚻 Toilet
- ♨️ Public Bathing
- 🏯 Temple & Shrine
- 🏠 Stay

Chausuyama Observation Platform



Shukugawa

Ajara Highland Tunnel

